

## Water Shutoff Valves

**These steps are being provided as a guide to preventing damage in the event of a water leak in your Condo.**

**Neither the Deacon Ridge HOA nor RPM are responsible for damaged caused by you because of failing to read and or follow these instructions.**

**Failure to not turn off the water will cause your bathroom or kitchen to flood, and if you are on the 2<sup>nd</sup> or third floor, your neighbor's units also.**

Our Condos are 20+ years old, and there are several areas where water leakage can occur. If you do have a water leak, you can minimize the damage by shutting the water supply to your condo.

The information below will aid you in locating and closing the main water supply to your condo.

## Locating the Shutoff Valves

The water shutoff valves are located in the closet area where your hot water heater is located.

- If you have a condo with a balcony, the hot water heater is located in a small room on your patio/balcony.
- If you have a condo without a balcony, the hot water heater is located in a closet inside your unit.

## Balcony/Patio Water Heaters

Hot Water heaters located on your balcony or patio will have a valve located above the water heater on the water line entering the water heater (see below).



The valve shown above is closed by moving the red handle 90° to a vertical (↑) position.



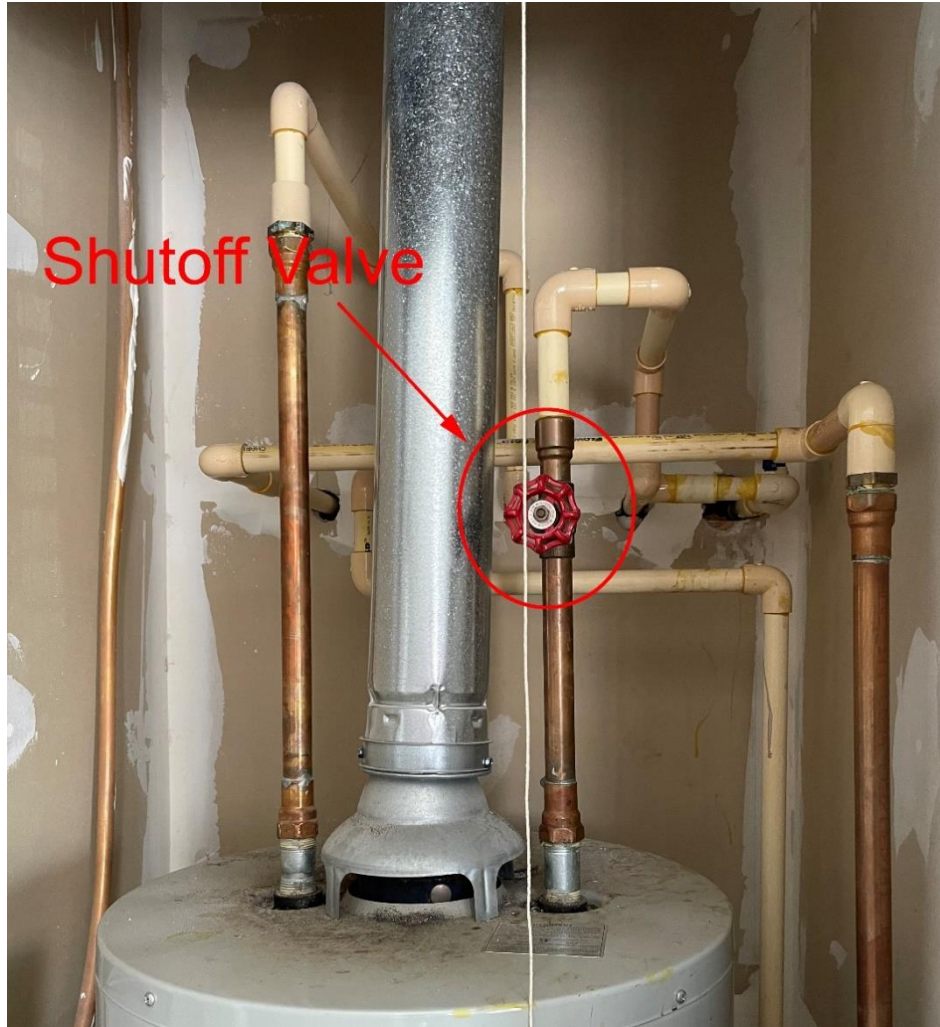
NOTE: The indications on the valve are NOT always correct. In the photo above, the handle indicates that the valve should be in a vertical position to be open. That is not how this installation works – the valve is installed backwards.

To close the valve, carefully move the red handle to a vertical. (The valve will only close in one direction.)

Once the valve is closed, open the faucets in rooms other than where the water is leaking to drain any water remaining in the pipes. Then **CALL A PLUMBER!**

## Interior Water Heaters

Condos without a balcony or patio will have their hot water heaters in a closet inside the condo.



In the picture above, the shutoff valve is a standard gate-type valve with a handle that must be rotated CLOCKWISE (turn to the RIGHT) to close.

**Note:** There is no guarantee that your hot water shutoff valve will match the one shown above. Some condos will have a valve similar to the one shown on page 3.

To close the valve, carefully rotate the round handle to the RIGHT (clockwise) until it stops moving. (The valve will only close in one direction.)

Once the valve is closed, open the faucets in rooms other than where the water is leaking to drain any water remaining in the pipes. Then **CALL A PLUMBER!**